

X-Ray - 3520

Portable X-Ray Imaging System



EPCC / PRODUCTS / APPLICATION / SOFTWARE / ACCESSORIES / CONSUMABLES / SERVICES

Analytical Technologies Limited

An ISO 9001 Certified Company

www.analyticalgroup.net

►► PULSE PORTABLE X-RAY UNIT

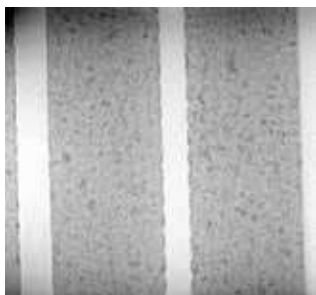


The pulse x ray equipment generates high energy within 25 nanoseconds. The output dose of each pulse is about 3mR at 12 inches((30.50cm) from the source in the front.

The oversized imaging area permits the multi-sample detection. The testing results are presented on the computer in a real-time way, which can be saved and printed.

►► PRODUCT ADVANTAGES

- small size with remarkable penetration.
- All the accessories can be packed in a case, easy to transport.
- Large imaging area permits multi-sample detection.
- All-battery-powered, wireless control and wireless transmission.
- Low cost, saving labor and time cost.
- Less management cost than that of radiation source.
- Simple user interface with the setting of variable energy.
- small radiation dose, safe and reliable.

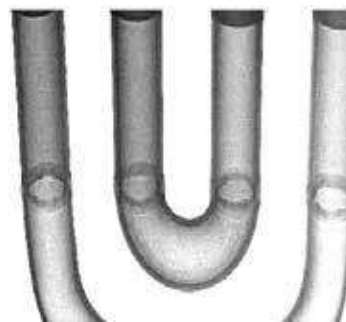
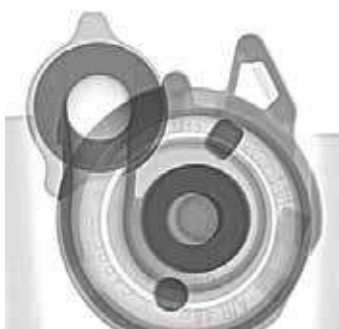
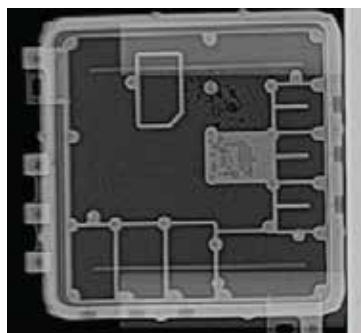


►► SPECIFICATIONS

Parameter		Model		
		AL-DR-3150	AL-DR-3270	AL-DR-3370
X-Ray Machine	Voltage	150kV	270kV	370kV
	Output	Max 4.0 Mr/pulse, min 2.6Mr/pulse, 12 inches away from the source.		
	Pulse rate	15pulses /second	25pulses / second	1 Opulses / second
	Pulse width	60nanoseconds	25nanoseconds	15nanoseconds
	Source dimension	3mm		
	Beam angle	40°		
	Max. penetration	12mm(A3 Steel)	23mm(A3 Steel)	50mm(A3 Steel)
	Weight	4.5kg	5.4kg	10.5kg
Power		20V portable and rechargeable nickel-cadmium battery		
Image size		350 x 430 mm		

►► HIGH FREQUENCY PORTABLE X-RAY UNIT





Y.SMART series constant potential portable x ray machine uses high frequency switching technology featured by stable x ray output and short exposure time which incredibly increase the working efficiency.

►► **PRODUCT ADVANTAGES**

- Insensitive to the fluctuating power, low power consumption
- stable energy output and larger voltage output range
- Automatic machine warming-up
- Shockproof design on each line connection
- Using metal ceramic x ray tube, small size and light weight.

►► **SPECIFICATION OF 300KV X-RAY SOURCE**

Tube type	300kV, ceramic x ray tube, tungsten filament anode.
Tube voltage range	50 - 300kV, adjustment accuracy 1 kV
Tube current range	0.5 - 3mA, adjustment accuracy 0.1 mA
Target angle	20°
In he rent filter	4mmBe
Beam angle	40°x55°
Focal spot size (EN12543)	d=3.0mm
Continuous rating	900W
Temporary load rate(30'C)	1 ooss
Enclosure rate	IP65
Max penetration(SteelA3)	65mm

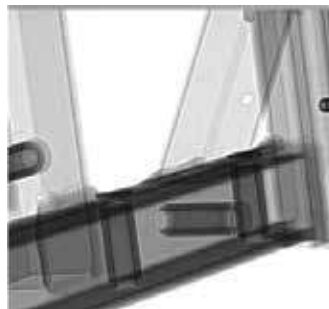
Exposure condition	Focal distance: 700mm, film type: AGFA 07
Exposure time	10min
Film density	2.0
Generator size and weight	<P295x775mm, 33kg
Controller size and weight	465x323x154mm, 11.3kg

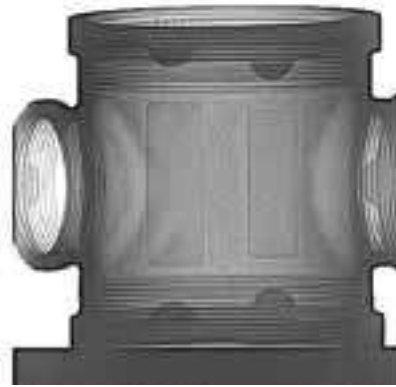
►► CONVERSION FREQUENCY PORTABLE X-RAY UNIT (CR)



►► PRODUCT ADVANTAGES

- Easy to operate
- Very light only with 21 kg
- Connecting to internet quickly or as the independent workstation
- Wifi connecting to internet function
- Powerful images processing system by D-Tech software





►► SPECIFICATION OF CR SYSTEM

Focus size	30μm
Pixel distance	30, 50, 75, 100 μm
Max.film width	350mm
Gray solution	16 bits
Working noise	49 dB
Built-in eraser	Yes
Connecting port	USB 2.0
Laser sort	1 (EN 60825-1)
Total power	120W
Size	390x380x520 mm
Weight	21kg
Supplying power	100-240V, 50-60Hz

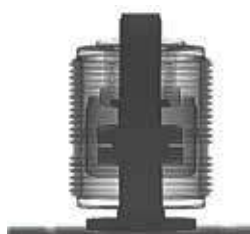
►► FUNCTIONS OF IMAGES PROCESSING SOFTWARE (D-TECT)

- Images processing functions: View the inspected images by Logarithmic FUNC, index FUNC, Linear FUNC, and strength the most interesting area (ROI), such as the contrast enhancement, images color adjustment, images smoothing, images sharpening and variety of relief function, and variety of pseudo colors displayed function.
- Image measurement functions: measure the thickness of the faults inspected with its length, areas and angles.
- Image zoom, rotate and flip function, also the magnifying function
- Export the images to disk or CD, and also can be restore to its original images formats after changing.
- Images matching and archiving functions.
- Can be set up for multiple projects.

►► CONVERSION FREQUENCY PORTABLE X-RAY UNIT

►► PRODUCT ADVANTAGES

- The small X-ray generator with wind cooling by anode grounding
- The light weight for easy to take, and easily operate it
- Working rate 1: 1
- Reasonable design with nice performance
- Delayed exposure to make sure the operator's safety



►► SPECIFICATION OF DETECTOR

Detector mode	A-si
Scintillator	GOS
Image size	350mmx210mm
Pixel matrix	2560x1536
Pixel pitch	139μm
AID conversion	16bit
Space solution	3.6 LP/mm
Captured image time	1 s(wired)/2 .5s(wireless)
Energy of X-rays	40-450 kV
Weight	2.9 kg
Working environment	5~35°C, 10-75% RH

►► SPECIFICATION OF 300KV X-RAY SOURCE

Input voltage	100~300kV
Tube current	5mA
Focus size	2.5x2.5mm
Radiation angle	40°
Sensitivity	<1.5o/o
Film density	0>1.5
Max.penetration by film	50mm (Fe)

►► PORTABLE X-RAY FLAW DETECTOR

Type	Model	Output voltage (kV)	Focus size (mm)	Beam angle	Max. penetration A3 Steel (mm)	Weight of generator (kg)	Size of generator (mm)
Frequency Conversation	XXG-3605	50~160	0.8x0.8	40+5°	19	14.5	225x225x550
	XXG-3005	50~200	2.0x2.0	40+5°	30	18	285x285x615
	XXG-3505	50~250	2.0x2.0	40+5°	40	30.5	320x320x640
	XXG-3305	100~300	2.5x2.5	40+5°	50	36.5	345x345x670
	XXQ-3605	50~160	0.8x0.8	40°	19	15.2	225x225x585
	XXQ-3005	50~200	1.5x1.5	40+5°	30	23	285x285x665
	XXQ-3505	50~250	2.0x2.0	40+5°	40	35	320x320x730
	XXQ-3305	100~300	2.3x2.3	40+5°	50	45.5	345x345x830
High Frequency	EVO 3600	20~160	1.0	40°x60°	30	22	φ295x610
	EVO 3000	30~200	1.0	40°x60°	43	23	φ295x630
	EVO 3300	50~300	3.0	40°x60°	65	29	φ295x774
Pluse	Golden3150	150	3.0	40°	12	4.5	230x103x77
	Golden3270	270	3.0	40°	25	5.9	360x108x189
	Golden3370	370	3.0	40°	50	10.5	495x115x216

►► DIGITAL FLAT PANEL DETECTOR

Model	Detector Type	Scintillating medium	Image Size	Pixel pitch	Spatial Resolution	X-ray working range	Working temperature
Maple3343	A-Si	Gd SO	350x430mm	139μm	3.6LP/mm	40~225kV	5-35°C
Maple3135	A-Si	Gd SO	350x210mm	139μm	3.6LP/mm	40~450kV	5-35°C
Paxscan3530H E	A-Si	Cesiumiodide	250x300mm	139μm	3.6LP/mm	20kV~16mV	-10-40°C

HPLC Servicing, Validation, Trainings and Preventive Maintenance :

HPLC Servicing :HPLC Servicing : We have team of service engineers who can attend to any make of HPLC promptly @the most affordable cost.

Trainings :We also take up preventive Maintenance to reduce downtime of HPLC's Trainings.

AMC's/CMC :AMC's/CMC :We offer user training both in-House and at customer sites on HPLC principles, operations, trouble-shooting.

Validations :Validations :We have protocols for carrying out periodic Validations as per GLP/GMP/USFDA norms.

Instruments :Instruments :We offer instruments/Renting Services Modules like pumps,detector etc. on Rent.



About Analytical Technologies

Analytical Technologies is synonymous for offering technologies for doing analysis and is the Fastest Growing Global Brand having presence in at least 96 countries across the global. Analytical Technologies Limited is an ISO:9001 Certified Company engaged in Designing, Manufacturing, Marketing & providing Services for the Analytical, Chromatography, Spectroscopy, Bio Technology, Bio Medical, Clinical Diagnostics, Material Science & General Laboratory Instrumentation. Analytical Technologies, India has across the Country operations with at least 4 Regional Offices, 6 Branch Offices & Service Centers. Distributors & Channel partners worldwide.

Our Products & Technologies



UV/VIS
Spectro 2080+
Double Beam



Infra FTIR



Optima Gas
Chromatograph
3007



Optima Gas
Chromatograph
2979 Plus



Flash
Chromatograph



Atomic Absorption
Spectrophotometer



Liquid Particle
Counter



Optical Emission
Spectrophotometer



DSC/TGA



Semi Auto Bio
Chemistry Analyzer



HEMA 2062
Hematology
Analyzer



Micro Plate
Reader/Washer



URINOVA 2800
Urine Analyzer



Total Organic
Carbon 3800



Fully Automated
CLIA



NOVA-2100
Chemistry Analyzer



PCR/Gradient PCR/
RTPCR



TOC
Analyzer



Laser Particle
Size Analyzer



Ion Chromatograph



Water purification
system

Regulatory compliances



Corporate Social Responsibility

Analytical Foundation is a nonprofit organization (NGO) found for the purpose of:



Analytical
Foundation

1. Research & Innovation Scientist's awards/QC Professional Award : Quality life is possible by innovation only and the innovation is possible by research only, hence ANALYTICAL FOUNDATION is committed to identify such personalities for their contributions across various field of Science and Technology and awarding them yearly. To participate for award, send us your details of research / testing / publication at Info@analyticalfoundation.org

2. Improving quality of life by offering YOGA Training courses, Work shops/Seminars etc.

3. ANALYTICAL FOUNDATION aims to DETOXYFY human minds,souls and body by means of yoga, Meditation, Ayurveda, Health Care, Awards, Media, Events, Camps etc.



HPLC Solutions MultipleLabs Analytical Bio-Med Analytical Distributors Analytical Foundation (Trust)

Corporate & Regd. Office:
Analytical House, # E67 & E68,
Ravi Park, Vasna Road, Baroda,
Gujarat 390 015. INDIA

T: +91 265 2253620
+91 265 2252839
+91 265 2252370
F: +91 265 2254395

E: info@hplctechnologies.com
info@multiplelabs.com
info@analyticalgroup.net

W. www.analyticalgroup.net
www.hplctechnologies.com
www.multiplelabs.com

Sales & Support Offices:
across the country :
Distributors & Channel
partners World Wide